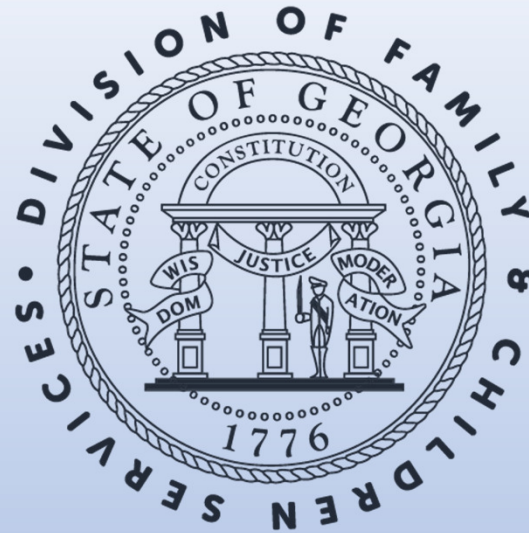




Candice Broce

Director



CPA Monthly Series

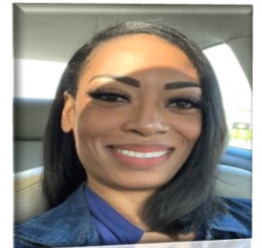
OPM Resource Development

MEET OUR *Team*

Andria Bolton
(Provider Relations Manager)
Andria.Bolton@dhs.ga.gov
(404) 895-7135



Amy Hill
Amy.hill1@dhs.ga.gov
(478) 244-6379



Azure McCollough
Azure.mccollough@dhs.ga.gov
(404) 463-1589



Shanise Wooten
Shanise.wooten1@dhs.ga.gov
(404) 548-6756




Tomeka Branscomb
Tomeka.branscomb1@dhs.ga.gov
(404) 796-5053



Angela Butts
Angela.butts@dhs.ga.gov
(470) 217-7631



Blake Boyer
Blake.Boyer@dhs.ga.gov
(706) 525-1130



Agenda

1. Data Overview
 2. Caregiver Recruitment and Retention Unit
 3. SAFE Consortium
 4. Argo - Placement Tool
 5. Placement Matching
 6. Reminders and Recognition
-



Unapproved
Re-evaluations

61 Overdue Re-
Evaluations

7 Kenny A Homes

2 Re-evaluations
pending OPM review



What does OPM need?

WE ARE ASKING THAT ALL OVERDUE RE-EVALUATIONS BE SUBMITTED IMMEDIATELY

ALL RE-EVALUATION APPROVAL LETTERS MUST REFLECT THE NEW TWO-YEAR APPROVAL TERMS

Approval Letter Content

- Approval Letter Date
- Name and Address of the Caregiver
- Approved Placement Age Range
- Approved Placement Capacity
- Approved Placement Gender
- Approval Terms Begin and End Date
- Agency Case Support Working Name, Contact and Urgent or After-Hours Contact Information
- Agency approver/designee signature

*HAVE QUESTIONS,
COMMENTS OR
CONCERNS?*





Caregiver Recruitment and Retention Unit – Announcement



SAFE Consortium-Updates

A pair of black-rimmed glasses is resting on a stack of papers and a notebook. A red ribbon bookmark is visible on the left side. The background is blurred, showing more papers and a wooden surface.

DFCS VS SAFE-SAFE Update Assessment Requirement

14.13 Family Re-Evaluation

- A comprehensive Re-evaluation should be completed every two years using the SAFE Update Assessment.
- All individuals (Assessor, Supervisor and Approving Authority/Designee) must be SAFE Certified.
- Initiate the re-evaluation process at least 90 calendar days prior to the expiration date of the current approval term which allows adequate time to gather all documents.
- Assess the home to ensure compliance with Policy 14.1 Safety and Quality Standards.
- Confirm that the caregivers have met the required hours of continued parent development. As well as current CPR and First Aid Certifications.
- Identify the family's developmental stage and observe their interactions around various tasks associated with their developmental stage.

SAFE Update Interviews

- *Interviews must occur in the caregiver's home and each household member must be interviewed.
- Address the relationship between the agency and the caregivers, including the caregiver's ability to accept supervision.
- Discuss the effects of children leaving the home and how the caregivers prepare for departures.
- Discuss the caregiver's protective capacities.
- Review the past year's disciplinary practices and issues.
- Address the caregivers continued parent development.
- Inquire about 911 incidents within the review period.

SAFE Update GA Required Forms

- Caregiver Child Safety Agreement (Form 29)
- Financial Statement (Form 44)
- *CPS History Request Form
- Caregiver Feedback Survey
- Caregiver Placement Preferences Form
- Water Safety Assessment (if applicable)
- Caregiver Home Inspection Safety and Compliance Checklist
- Confidentiality and Privacy Standards Agreement
- Approval Letter

Supplemental Verifications

- Copy of Driver's License
- Copy of Automobile Insurance
- Verification of Income
- Proof of current utility payment
- Pet Vaccination Record
- Immunization Records
- Training Certificates and CPR & First Aid
- CPS Screening Results
- Online Safety Screening Results
- Driver's Safety Screening Results
- Marriage Certificate/Divorce Decrees
- Death Certificate
- Water/Sewer Bill/Environmental Statement
- Verification of Mortgage or Lease Agreement
- TB Test Results
- Proof of Citizenship or Permanent Resident if applicable



Argo Placement Tool



Placement Matching

Recruitment and Retention Plan Policy 14.6

- Recruit based on child specific needs
- Onboard families who can meet the needs of our youth based on the specified needs list : medically fragile, LGBTQIA, teens and sibling groups
- Utilize targeted recruiting based on regional and state needs data
- Use non-discriminatory practices when recruiting families
- Retain homes by considering the level of foster parent satisfaction (Routine Surveys)
- Conduct exit interviews with families leaving your program
- Ensure the caregivers are aware of the grievance process
- Develop respite partnerships
- Offer ongoing foster parent trainings, support groups and meetings (AFPAG)
- Establish a procedure for placement disruptions. Clarify expectations to facilitate a smoother transition to all parties

Scenario Practice Part 1

- Your agency receives a universal application for a 10 year old boy named Adam who has diagnoses of ADHD, and learning disability. Adam has a history of stealing, wetting the bed, and hoarding food. There is some suspicion that Adam has been sexually abused in the past, but nothing has been substantiated and no definitive disclosure has been made. Adam is currently being placed separate from his siblings due to his aggression toward them and due to the previous foster parents desiring to disrupt only him out of their home.
- Your agency has two potential placements for this youth:
 - A single foster mom who already has placement of 2 boys ages 6 and 8. Her current placements have some similar behavioral issues that she has had some success with parenting. However, she has lately often expressed being overwhelmed and stressed due to the volume of needs and the lack of services that have been identified in the community to assist her.
 - A young couple with a 3 year old bio child. This couple previously attempted to foster a sibling group of 3 and disrupted the placement after only 4 months. Although they had stated they wanted to assist with sibling groups and with various behavioral issues, when they first ran into those behavioral issues they quickly disrupted without accepting intervention. They are currently stating they want to try again with Adam, and feel that one child will be more manageable.

Scenario Practice Part 1

- What kind of training/experience ideally would a caregiver have to take placement of Adam?
- What trainings would you recommend based off the UA?
- What would conversations look like during home visits after placement?



Scenario Practice Part 2

- Your agency decides to place with the young couple, in the hopes that they have more time and energy to address Adam's needs. However, the same disruption pattern happen again. Although the couple express no major concerns to staff after placement or during monitoring visits, they call suddenly one day 2 months into the placement and demand that someone needs to pick him up today. The foster mother has just discovered a large food stash underneath Adam's bed, as well as \$20 in cash. When confronted about this, Adam began to throw a tantrum and threw a few items that almost hit their 3 year old daughter.
- How would you and your agency handle this foster parent's request to disrupt the placement?



Scenario Practice Part 2

- If the foster parent agreed to keep Adam, how would your agency handle training implementation?
- How would your agency utilize the family's natural supports?
- How would you coach the parent to handle the confrontation differently next time? How did they contribute to the escalation?
- Are there any measures that could be taken to keep their biological child safe?
- If the family disrupts, what would your agency talk to the family about moving forward? How would this incident change how you match them with other children?





Questions?





Five Year Re-certification – NCIC/GCIC

- Re-evaluation Policy 14.13 Reminder Provide caregivers at least 90 calendar days' notice of the need for any medical evaluations or criminal records checks (Fitness Determination Letter) for themselves or household members.
- Conduct a fingerprint-based criminal history records check (CRC) of the National Crime Information Center (NCIC) database on all caregivers and adult household members at least every five years from the date of the Initial Family Evaluation. **The CRC must be conducted within 90 days prior to the re-evaluation due date (see policy 19.8 Case Management: Criminal Records Checks).**

Note

- Due to policy and Shines new enhancement **ALL NCIC/GCIC** completed in 2018 needs to be completed prior submitting the re-evaluation. Shines will not allow the home to be processed and approve without the current screenings.

GA SCORE Updates Needed

- A total of 15 continued parent development annual training hours for each caregiver are needed in GA SCORE by October 15, 2023
- Timely submission of caregiver five-year medical and criminal screenings and 18-year-old household member medical, criminal and safety screenings in GA SCORE
- Ensure the most current agency staff members and agency contacts are always listed in GA SCORE
- Ensure the most current CPR and First Aid training information is entered in GA SCORE

Helpful Resources

- ODIS
<https://odis.dhs.ga.gov/General>
- RBWO minimum standards
https://www.gascore.com/documents/FY23_RBWO_Minimum_Standards_update.pdf
- SAFE website
<https://www.safehomestudy.org/>
- OPM RD team



Questions





Monthly Recognition

Top Admissions Meeting the State Needs

All Admission 01/01/2023-08/30/2023

Admissions: Youth 13+

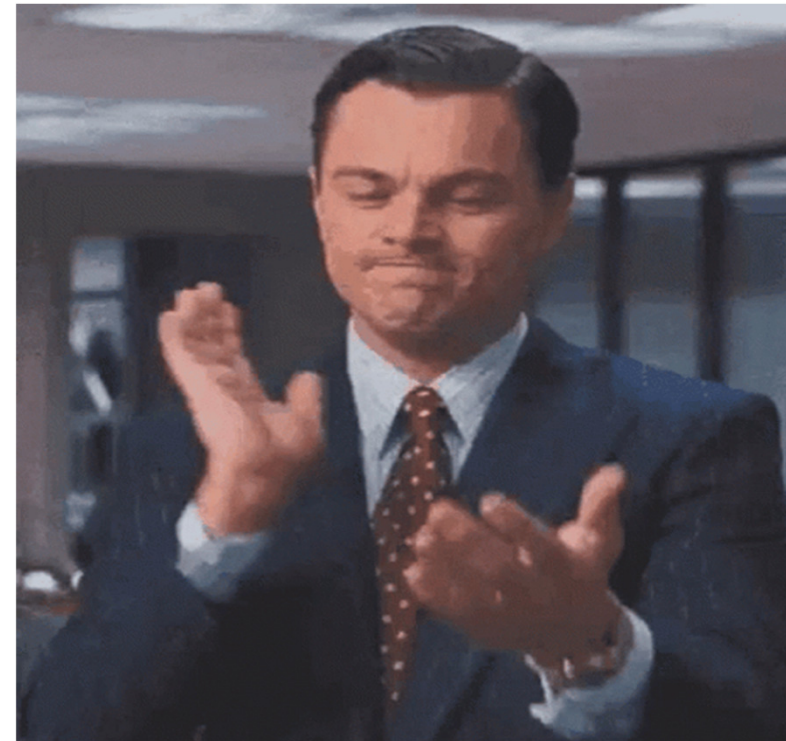
- National Youth Advocate Program East Point/Decatur
- Safe Haven Around the Clock
- Creative Community Services

Admission: Siblings Group

- Trinity J and D LLC
- Families 4 Families-Griffin
- New Beginnings

Admission: Specialty MWO or Higher

- Creative Community Services
- Elks Aidmore
- Universal Health Services of Savannah



Agencies at 100% Approved Homes in the month of August 2023

- Boyz 2 Men Development
- Cherish All Gods' Children
- Childkind, Inc
- Children 1st Development (Gentian Blvd)
- Chris 180
- Community Connection
- Devereux GA Treatment Network
- Elks Aidmore (Savannah, Valdosta)
- Necco (Columbus, Martinez, Savannah, Statesboro, Valdosta)
- Families 4 Families –(All locations)
- Foster Love Ministries
- Georgia Baptist Children' Home (Palmetto Campus)
- Goshen Valley
- Health Connect America



Agencies at 100% Approved Homes in the month of August 2023
Continued

- Inspiritus (Atlanta & Rome)
- Integrated Health Center
- It is Well foster Care
- Lighthouse
- Mentor (Augusta Macon, Savannah & Valdosta)
- Murphy-Harpst
- National Youth Placement Corp
- Neighbor to Family (Douglas, Fulton, Gwinnett, Henry & Richmond)
- Nightlight Christian Adoptions
- Normal Life of Georgia (Atlanta & Valdosta)
- Raintree Village
- Safe Haven Around the Clock
- Seeds That Grow (Oglethorpe & Albany)
- Trinity J and D LLC
- United Methodist Children Home (Augusta)
- Winshape



A scenic landscape featuring a mountain range under a bright, hazy sky, with a field of tall grass in the foreground. The sun is low on the horizon, creating a warm, golden glow. The mountains are silhouetted against the light sky, and the grass in the foreground is backlit, giving it a golden hue.

QUOTE FOR THE MONTH
FOR AUGUST



"If everyone is moving forward together, then success takes care of itself"

Henry Ford | Besthqwallpapers.com

Suggestions

OPM RD TEAM would love your feedback and suggestions. Please send information to opm.leadership@dhs.ga.gov

